

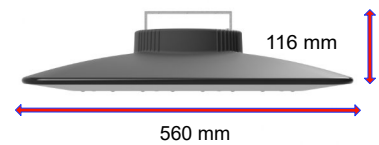
APPLICATION

CH64B is a LED ceiling light for installation in industrial environments, with heights from 5 meters to 25 meters. Depending on the installation height, up to 2 different optics are provided.

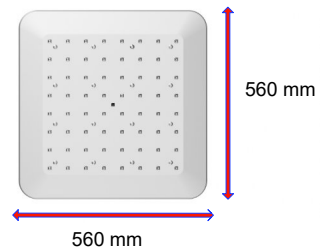
ADVANTAGES

- Optics with LSR optical silicone lenses: high transparency, resistance to high temperatures, anti-yellowing, resistance to oils and dust.
- IP65 protection
- High uniformity on the ground

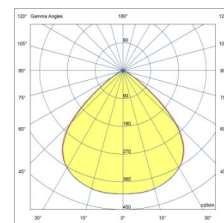
DESCRIPTION	VALUE
Power	150W
Voltage	100÷280V AC 50/60Hz
PFC	≥0.99
Light source	64 power LED
Luminaire nominal flux	24.064 lm
Color temperature	4000K (5000K)
CRI	≥80
Lenses	Silicone
Dimensions	560x560x116 mm
Material	PA6.6 / Aluminium L5754
Insulation class	I
Weight	6,5 Kg
Degree of protection	IP65
Working temperature	-30°C +60°C
IK resistance degree	9
Working humidity	0÷98% R
Lifetime	>60.000 h L80



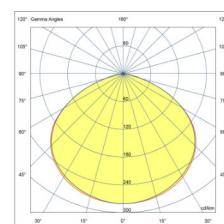
DIMENSIONS



WIDE OPITC 100°x 100° - CH64BL



Double WIDE OPITC 120°x 120° - CH64BL



FIXING METHOD

CH64B is a lighting fixture, suitable for indoor use or under a roof, which can be installed on the wall or ceiling; in adherence or suspended; in horizontal or inclined position; at a height between 5 m and 25 m above the ground; in a position that can only be reached by qualified technical personnel. Basically, the following solutions are provided for installing the **CH64B** appliance.

HANGING WITH CHAINS OR CABLES

To hang the **CH64B** luminaire with chains or cables, use the two holes located in the upper part of the bracket, inserting an M6 eyebolt fixed with a self-locking nut in each one.

HANGING BY BUSWAY

To suspend the **CH64B** appliance from the busway, it is necessary to use 2 hooks supplied by the busway manufacturer, suitable for use, to be fixed to the bracket (Fig. 1).

HANGING FROM A BEAM OR OTHER SUPPORT USING A SHORT COUNTER BRACKET (50mm) ADJUSTABLE

To fix the **CH64B** appliance to a pierceable beam or support, use the SHORT counter-bracket (fig.2)

FIXED TO A BEAM OR OTHER SUPPORT USING A SHORT ADJUSTABLE COUNTER-BRACKET

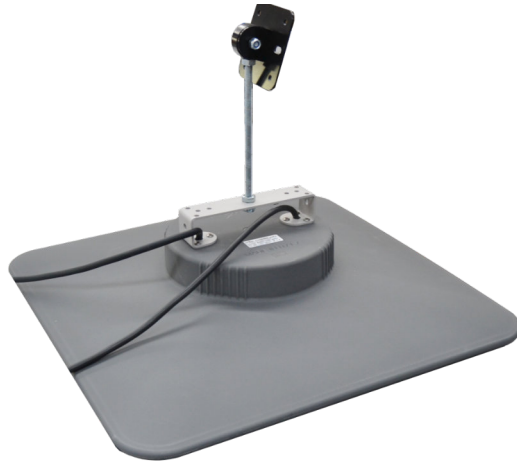
To fix the **CH64B** appliance to a beam or other drillable support and have the possibility of orienting it horizontally, use the short counter-bracket (fig.2) which must always be combined with the standard bracket (fig.1).

FIXED TO THE VERTICAL WALL, USING A LONG COUNTER-BRACKET (300 mm) ADJUSTABLE

To fix the **CH64B** appliance to a vertical or inclined wall, or to distance it from a ceiling or other horizontal support, use the long counter-bracket (fig.3)

HANGING FROM THE CEILING, VERTICAL OR INCLINED WALL OR OTHER SUPPORT USING THE APPENDINO

For suspended installations which also require an aesthetic as well as technical result, we recommend using the APPENDINO accessory, supplied separately. The hanger allows the **CH64B** luminaire to be suspended by fixing it to the ceiling or inclined beams of any shape.



OPTIONAL ACCESSORIES

- SHORT COUNTER BRACKET
- LONG COUNTER-BRACKET
- HANGER BRACKET

CH64B is the basic version of CH64, if you are looking for a more performing product, consult the **CH64D** data sheet.

CH64B can be set up for the DALI function and the EMERGENCY function.

FOR FURTHER INFORMATION:

LUXLED SRL – Milano (MI) - mail: info@luxled.it - ph. +39 0365 260350

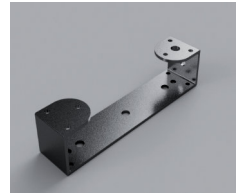


Fig. 1 - Standard bracket



Fig. 2 - Short counter bracket



Fig. 3 - Long counter bracket