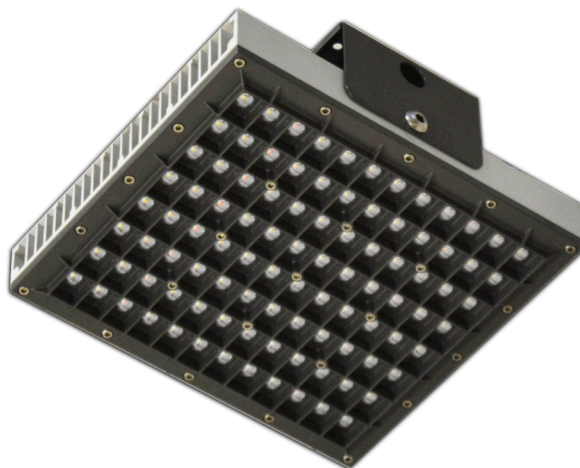


SI 96-07



APPLICATION

SI96-07 is a professional LED floodlight, derived from the version for sports fields and light towers, specifically designed for heavy industry. It stands out for the use of silicone optics, sandwich-mounted between the front and the heatsink, both made of aluminium. The result is an efficient product with very little light dispersion and low glare. The narrow 45°x45° optics make it optimal for very high industrial areas.

ADVANTAGES

- Optics with LSR silicone lenses, transparency superior to glass, resistance to high temperatures, anti-yellowing, resistance to oils and dust.- Corpo e fronte in alluminio per garantire una lunga vita e resistenza agli agenti esterni.
- Power supply integrated into the lamp body.
- High protection: LED side: IP68, power supply side: IP67

DESCRIPTION	VALUE
Power	210W
Voltage	230V (100÷305V AC 50/60Hz)
PFC	≥0.95
Lightsources	OSRAM Oslon Square power LED
Brightness	31.200 lm
Color temperature	4000K / 5000K
Color rendering	≥70-80
Lenses	silicone
Optic	NARROW 45°X45°
Dimensions	330x300x120 mm
Material	Aluminium/stainless steel/silicone
Insulation class	I
Weight	8 Kg
IP grade	IP67/IP68
Working temperature	-30°C +60°C
IK resistance grade	10
Working humidity	0÷98% R
Lifetime	>60.000 h L80

NARROW OPTIC 45°x45°

