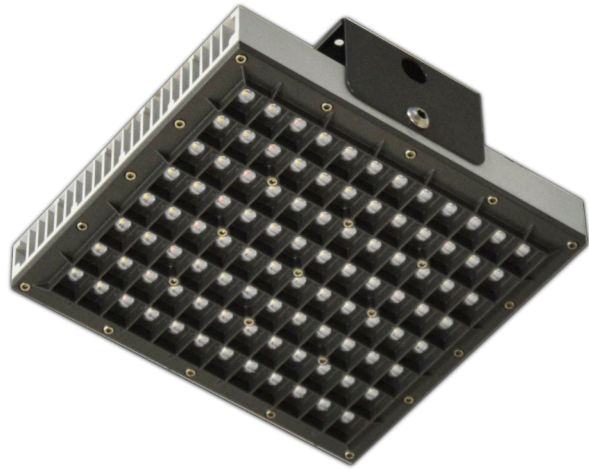


# SI96-08



## APPLICATION

**SI96-08** is a professional LED floodlight, derived from the version for sports fields and light towers, specifically designed for heavy industry. It stands out for the use of silicone optics, sandwich-mounted between the front and the heatsink, both made of aluminium. The result is an efficient product, with very little light dispersion and zero glare. The 60°x86° optics make it perfect for very large industrial areas.

## ADVANTAGES

- Optics with LSR silicone lenses, transparency superior to glass, resistance to high temperatures, anti-yellowing, resistance to oils and dust.
- Body and front in aluminum to guarantee long life and resistance to external agents.
- Power supply integrated into the lamp body.
- High protection: LED side: IP68, DRIVER side: IP67

DESCRIPTION	VALUE
Power	<b>210W</b>
Voltage	<b>230V (100÷305V AC 50/60Hz)</b>
PFC	<b>≥0.95</b>
Lightsource	<b>OSRAM Oslon Square power LED</b>
Brightness	<b>30.800 lm</b>
Color temperature	<b>4000K / 5000K</b>
Color rendering	<b>≥70-80</b>
Lenses	<b>silicone</b>
Optics	<b>MEDIUM 60°X 86°</b>
Dimensions	<b>330x300x120- mm</b>
Material	<b>Aluminium/stainless steel/silicone</b>
Insulation class	<b>I</b>
Weight	<b>8 Kg</b>
IP grade	<b>IP67/IP68</b>
Working temperature	<b>-30°C +60°C</b>
IK Resistance grade	<b>10</b>
Working humidity	<b>0÷98% R</b>
Lifetime	<b>&gt;60.000 h L80</b>

## Medium optic 60°x 86°

