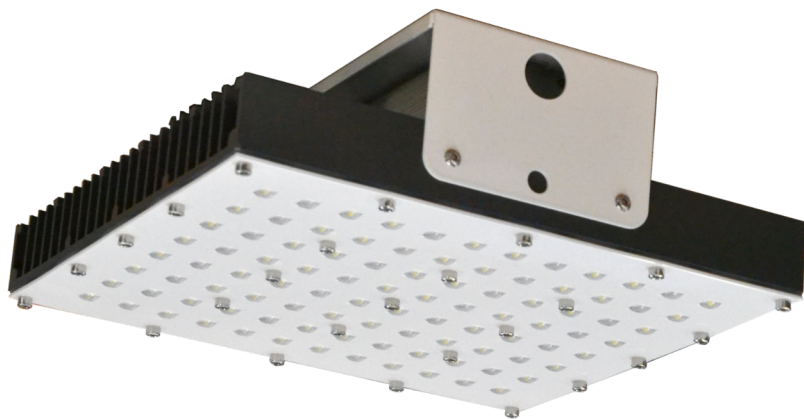


cut LED

SI 96-L



APPLICATION

SI 96-L is a professional LED floodlight, designed for industrial application. It stands out for the use of silicone optics, sandwich-mounted between the front and the heatsink, both made of aluminium. The result is an efficient product with great light coverage, amplified by the special 100°x100° silicone lenses.

ADVANTAGES

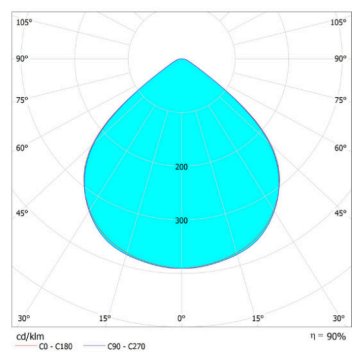
- Optics with LSR silicone lenses, transparency superior to glass, resistance to high temperatures, anti-yellowing, resistance to oils and dust.- Corpo e fronte in alluminio per garantire una lunga vita e resistenza agli agenti esterni.

- Power supply integrated into the lamp body.

-High protection: LED side: IP68, power supply side: IP67

DESCRIPTION	VALUE
Power	200W
Voltage	230V (100÷305V AC 50/60Hz)
PFC	≥0.95
Lightsource	OSRAM Oslon Square power LED
Brightness	30.080 lm
Color temperature	4000K / 5000K
Color rendering	≥80
Lenses	silicone
Optic	WIDE 100°X100°
Dimensions	330x300x120 mm
Material	Aluminium/stainless steel/silicone
Insulation class	I
Weight	8 Kg
IP grade	IP67/IP68
Working temperature	-30°C +60°C
IK Resistance grade	10
Working humidity	0÷98% R
Lifetime	>60.000 h L80

WIDE OPTIC 100°x 100°



OSRAM

