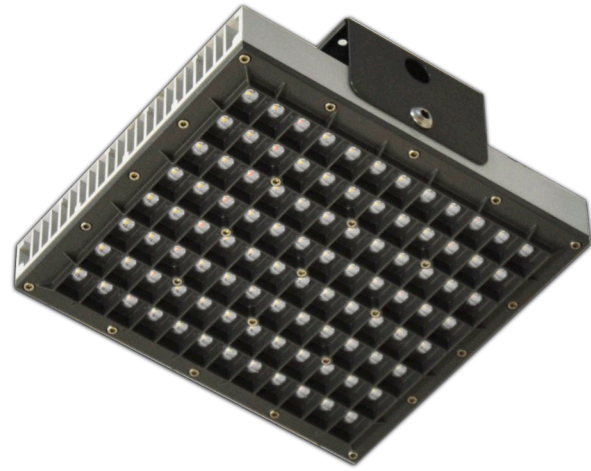




STL IN1-07



APPLICATION

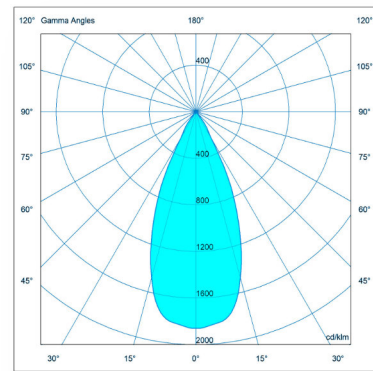
STL IN1-07 is a professional LED floodlight, derived from the version for sports fields and lighting towers, specially designed for heavy industry. It is distinguished by the use of silicone optics, sandwiched between the front and the heatsink, both in aluminium. The result is an efficient product with very little light leakage and low glare. The narrow 45°x45° optics make it ideal for very high industrial areas.

ADVANTAGES

- Optics with LSR silicone lenses, transparency superior to glass, resistance to high temperatures, anti-yellowing, resistance to oils and dust.
- Body and front in aluminum to guarantee a long life and resistance to external agents.
- Power supply integrated in the lamp body.
- High protection: LED side: IP68, power supply side: IP67

DESCRIPTION	VAUE
Power	210W
Voltage	230V (100÷305V AC 50/60Hz)
PFC	≥0.95
Light source	OSRAM Oslon Square power LED
Brightness	31.200 lm
Color temperature	4000K / 5000K
CRI	≥70-80
Lenses	silicone
Optic	narrow 45°X45°
Dimensions	330x300x115 mm
Material	Aluminium / stainless steel / silicone
Insulation class	I
Weight	8 Kg
Degree of protection	IP67/IP68
Working temperature	-30°C +60°C
IK degree of resistance	10
Working humidity	0÷98% R
Lifetime	>60.000 hours L80

NARROW optic 45°x45°



STL IN2-07



APPLICATION

STL IN2-07 is a professional LED floodlight, derived from the version for sports fields and lighting towers, specially designed for heavy industry. It is distinguished by the use of silicone optics, sandwiched between the front and the heatsink, both in aluminium. The result is an efficient product with very little light leakage and low glare. The narrow 45°x45° optics make it ideal for very high industrial areas.

VANTAGGI

- Optics with LSR silicone lenses, transparency superior to glass, resistance to high temperatures, anti-yellowing, resistance to oils and dust.
- Body and front in aluminum to guarantee a long life and resistance to external agents.
- Power supply integrated in the lamp body.
- High protection: LED side: IP68, power supply side: IP67

DESCRIPTION	VALORE
Power	420W
Voltage	100÷305V AC 50/60Hz
PFC	≥0.95
Light source	OSRAM Oslon Square power LED
Brightness	62.400 lm
Color temperature	4000K /5000K
CRI	≥70-80
Lenses	silicone
Optic	narrow 45°X45°
Dimensions	660x300x115 mm
Material	Aluminium / stainless steel / silicone
Insulation class	I
Weight	15,5 Kg
Degree of protection	IP67/IP68
Working temperature	-30°C +60°C
IK degree of resistance	10
Working humidity	0÷98% R
Lifetime	>60.000 hours L80

NARROW optic 45°x45°

